

Unit 7 : Image Painting, Editing and Layers

Introduction

This Unit describes about various painting tools; such as selection, cropping and measuring tools, retouching, drawing and type tools, Navigation tools, Foreground/Background and Quick Mask and various Editing tools such as; Blur, Sharpen, Smudge, Dodge, Burn and Sponge.

Lesson 1 : Painting Tools

1.1. Learning Objectives

On completion of this lesson you will be able to describe:

- ◆ Sketching images with various Tools.
- ◆ Painting images with various Tools.







1.2. Introduction

Adobe Painting Tools panel

When you run Photoshop, the Tools panel appears docked on the left side of the screen. There are four main groups of tools, separated by functionality on the Tools panel: selection, cropping, and measuring; retouching and painting; drawing and type; and navigation. At the bottom of the Tools panel, you find Set foreground color and Set background color, as well as Quick Mask.





There are four main groups of tools, separated by functionality on the Tools panel: selection, cropping, and measuring; retouching and painting; drawing and type; and navigation.

Selection, Cropping, and Measuring Tools

ICON	TOOL NAME	USE
	Move (V)	Moves selections or layers.
	Marquee (M)	Makes rectangular, elliptical, single row, and single column selections.
	Lasso (L)	Makes freehand, polygonal (straight-edged), and magnetic selections.
	Quick Selection (W)	Make selections by painting.
	Crop (C)	Crops an image.
	Eyedropper (I)	Samples pixels.

Graphics Design

Drawing and Type Tools

ICON	TOOL NAME	USE
	Pen (P)	Draws a vector path.
	Horizontal Type (T)	Creates a type layer.
	Path Selection (A)	Allows you to manipulate a path.
	Rectangle (U)	Draws vector shapes.

Navigation Tools

ICON	TOOL NAME	USE
	Hand (H)	Navigates the page.
	Zoom (Z)	Increases and decreases the relative size of the view.

Sketching with a Pencil tool

You will practice sketching the ancient Egyptian temple of Luxor by tracing an image made from a 3D model using following steps.

Step 1. Open the desired file in Photoshop (Figure1).

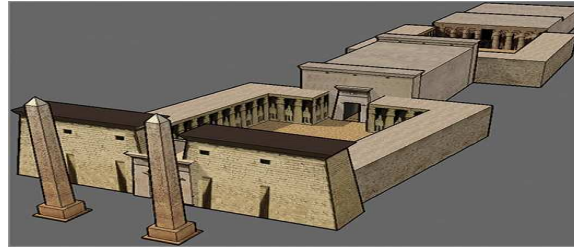


Figure 1: Image of Temple of Luxor.

Step 2. Create a new layer by clicking the **Create a new layer button** shown at the bottom of the Layers panel. Rename this layer **Sketch**.

Step 3. Select the Pencil tool, you can either open the fly out menu or press **Shift+B** to cycle through its tools until the Pencil tool icon appears.

Step 4. Press the left or right bracket keys until the brush size reads 4 pixels on the options bar.

Step 5. Start tracing the edges of the building. You can click, **hold Shift**, and click again to draw a straight line. Sketching is easier with a stylus and tablet than with a mouse.

Step 6. Press 'R' to select the Rotate View tool. Drag the canvas to rotate it clockwise or counterclockwise. Press B to return to the Pencil tool and continue sketching (Figure 2).

Image Painting, Editing and Layers

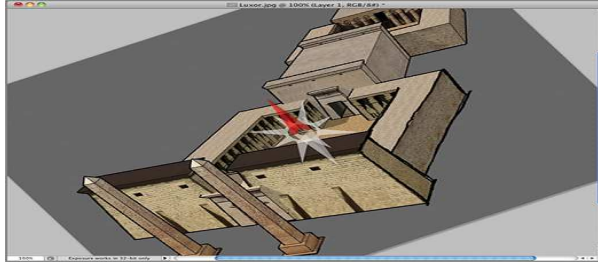


Figure 2: Rotating view

Step 7. Sketched major lines, decrease brush size to 1 pixel by pressing the left bracket key three times.

Step 8. Select the Background layer. Choose Layer ⇒ New Fill Layer ⇒ Solid Color. Click **OK** to accept the default name of Color

Fill 1. Select white in the color picker that appears and click **OK**. Your sketch now appears against a white background (Figure 3).

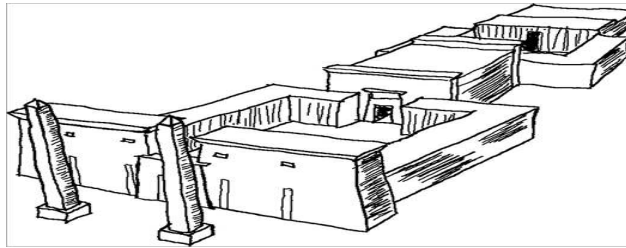


Figure 3: Completed pencil sketch

Step 9. Save your work as Sketch.tif.

Brush Tool

The Brush tool has far more nuance than the Pencil tool. In the following steps you will paint the sketch you developed in the previous head.

Step 1. Open your desired file in Photoshop.

Step 2. Select Color Fill 1 layer and then click the **Add A New Layer button**. Rename this layer.

Step 3. Toggle off layer Color Fill 1. Press I to select the Eyedropper tool. Toggle on Color Fill 1.

Step 4. Select the Brush tool. Right-click the canvas and the Brush Preset picker appears. Select the first brush (Soft Round)

Graphics Design

and then drag the Size slider to 15 px and the Hardness slider to 50% (Figure- 4).

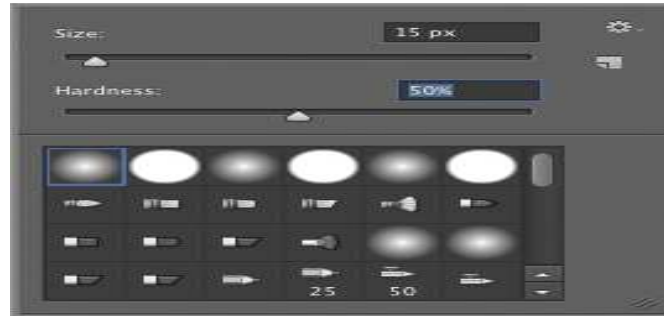


Figure 4: Choosing a brush and configuring its size and hardness.

Step 5. Paint over all the surfaces having the color you sampled in step 3. Repeat step 3 and sample another color from a different surface.

Step 6. You can interactively change the brush size by holding **Opt+Ctrl** on Windows. Continue painting the rest of the surfaces while getting used to the brush. Figure 5 shows the result.

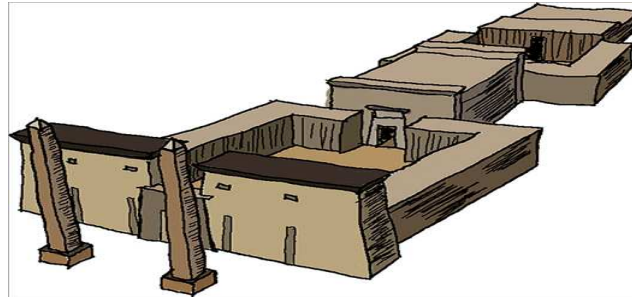


Figure 5: Painted sketch.

Step 7. Save your work as Painted Sketch.tif.



ACTIVITY

1.3 Multiple Choice questions

a. How many major areas of painting ?

- i) 2
- ii) 4
- iii) 6
- iv) 8.

b. Which one is not a measuring tool?

- i) Move (V)
- ii) Crop (C)
- iii) Brush (B)
- iv) Lasso (L).

1.4 Analytical questions.

1. What is Image painting in adobe Photoshop?
2. Describe about Image painting Tools in adobe Photoshop.
3. How can you sketch an Images using Pencil Tools?

Lesson 2 : Image Editing and Editing Tools

2.1. Learning Objectives

On completion of this lesson you will be able to learn:

- ◆ Editing images with various Tools.
- ◆ Moving opacity using Brush Tools.
- ◆ Editing image shapes using Lasso selector Tools.

2.2. Image Editing

Image editing encompasses the processes of altering images, whether they are digital photographs, traditional photochemical photographs, or illustrations. Traditional analog image editing is known as **photo retouching**, using tools such as an airbrush to modify photographs, or editing illustrations with any traditional art medium.

2.3 Image Editing Tools

The Image editing tools do not apply for painting of an image, but rather affect the colors already in an image.

Adobe Photoshop editing tools are **Blur**, **Sharpen**, **Smudge**, **Dodge**, **Burn** and **Sponge**.

To use any of these tools, you follow the steps:

- Step 1. Choose a tool from the Toolbar.
- Step 2. Set the parameters for the chosen tool in the Options Panel.
- Step 3. Bring the cursor into the image window.
- Step 4. Press the left mouse button and, while keeping it pressed, move the cursor over the image.

2.4 Blur, Sharpen and Smudge

It occupies one cell in the Toolbar, represented by the icon of the last tool used. To choose another instrument, press the triangle next to the icon and choose the desired icon from the menu that appears. This menu can also be accessed from the screen, if the icon is pressed and held for a few moments.



Blur The Blur tool reduces the sharpness (focus) of an image. It does this by reducing the color contrast of neighboring pixels.

Sharpen The Sharpen tool increases the sharpness (focus) of an image, by increasing the contrast of neighboring pixels. This results in increased clearness and contrast of borders, and heightened detail in the image.

Smudge The Smudge tool spreads color in an image, displacing pixels of corresponding colors. It is similar to the effect created by smearing your fingers through wet paint.

Brush, Mode, Strength, and Finger Painting

Brush To change the shape and size of the brush

- left-click on the triangular button to open the drop-down palette;
- Choose its shape from a selection of presets.

The palette can also be accessed by right-clicking anywhere in the image window.

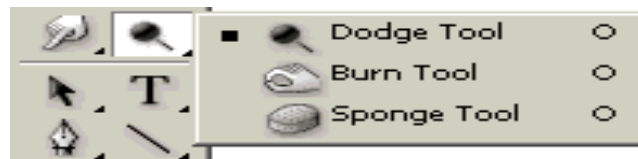
Mode The Mode parameter affects how a tool is applied. This parameter also switches between the modes in which the tool works.

Strength When using the Blur or Sharpen tools the Strength parameter affects the extent to which the tool changes the focus (sharpness) of an image.

Finger Painting This parameter is only available for the Smudge tool. If Finger Painting is checked, it will appear as if before smearing, the "finger" has been dipped into the main color.

2.5 Dodge, Burn and Sponge tools

Dodge, Burn and Sponge are tools that affect tone.



Dodge This tool lightens a part of an image, if the cursor is dragged across it.

Burn This tool darkens a part of an image.

Sponge The Sponge tool affects the saturation and contrast of an image.


2.6 Brush, Range, Exposure and Airbrush tools

Brush The Brush parameter affects the shape and size of the tool. To change the tools' shape and size

- press the triangular button with the left most button, to open the drop-down palette;
- Set the size and hardness of the tool in the palette or choose its shape from the selection of presets.

Range This parameter affects the mode in which the tool is applied. In Midtones mode dark and light areas are affected equally. In Shadows mode, pixels in darker areas (shadows) are affected more.

Exposure This parameter affects the degree of darkening for Burn and the degree of lightening for Dodge. A value of 100% leads to the maximum degree of darkening or lightening.


Airbrush When the  button is pressed the tool works in dispersion mode. The Sponge tool can be set in the Options panel with the following parameters **Brush**, **Mode**, **Flow** and **Airbrush**.

Lasso Selector Tools

Lasso selector tool is one of the most powerful selecting tools in adobe Photoshop. Adobe designers can select Image shapes more easy and efficient way. There are three types of Lasso Selector tools.

Simple Lasso


To make a freehand selection you should

Step 1. Select the Lasso tool from the Toolbox by left-clicking on the icon , or (if Lasso was not the last tool applied) select it from the floating window.

Step 2. Bring cursor to the object that must be selected and outline it keeping the left button pressed.

Polygonal Lasso

The tool makes freehand selections, but its contour is made up of straight segments. To make a selection you should

Step 1. Select the Polygonal Lasso tool from the Toolbox by clicking on the icon , or (if Polygonal Lasso was not the last tool applied) select it from the floating window.


Step 2. Bring the cursor to any point near the object to be outlined and press the left mouse button - it'll be the first point of the contour.

Step 3. Move the cursor to the next point of the contour not far from the first one and left-click it again.
The program will automatically draw a straight line between the two points.

Step 4. Keep putting points in this way until the whole object is outlined and close the contour.

Magnetic Lasso

This tool makes a freehand selection. To select an area using Magnetic lasso you should

Step 1. Select the Magnetic Lasso tool from the Toolbox by clicking on the icon , or select it from the floating window.

Step 2. Bring the mouse cursor to the border of the object that should be selected.

Step 3. Press the left button and start dragging and pay attention to fastening points that appear as you outline the object.

Step 4. Close the contour, that is join the first fastening point with the last one by bringing the cursor to the first point or by making a double-click.



ACTIVITY

CHECK YOUR PROGRESS

2.7 Multiple Choice questions

- a. Which is the appropriate tool to remove imperfections of Images?
 - i) Spot Healing (j)
 - ii) Move (V)
 - iii) Brush (B)
 - iv) Lasso (L).

- b. Controlling saturation and contrast of images, which tool is used?
 - i) Move (V)
 - ii) Sponge (S)
 - iii) Brush (B)
 - iv) Lasso (L).

2.8 Analytical questions

1. What is called Image Editing?
2. Describe about Image Editing Tools.
3. Discuss about the process to Editing Images with freelance.
4. How can you remove opacity of images using Brush Tools?

Lesson 3 : Smudge, Sharpen, Lightened and Patch Tools

3.1. Learning Objectives

On completion of this lesson you will be able to learn:

- ◆ Edit Images using Smudge Tools.
- ◆ Preparing separations for spot color and process color.
Lightening and darkling of images using curve.

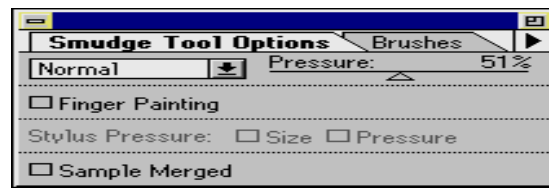
3.2. Introduction

Smudge Tools

The smudge tool is used to smear paint on your canvas. The effect is much like finger painting. You can use the smudge tool by clicking on the smudge icon and clicking on the canvas and while holding the mouse button down, dragging in the direction you want to smudge.

3.3. Practice with Smudge Tools

Step 1. First you have to locate it in the Options palette.



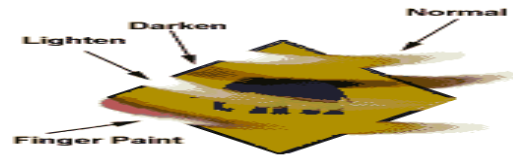
Step 2. Then set pressure option. Set it to 51% and it will be as if you are trying to smudge dried paint.

Step 3. Then set brush options menu such as "Darken" and "Lighten". Examples are shown below.



Step 4. Then set "Finger Painting" option. When the finger painting checkbox is checked, Photoshop will add a little bit of foreground color to your smudge.

Graphics Design



Step 5. Then set "Sample Merged" option to select blend colors from lower layers.

Sharpening Image

Now that you have adjusted the tonal values of your image, you'll want to apply some sharpening to the image. In this section, you'll discover how to use UN sharp masking. It is a confusing term, but is derived from the traditional (pre-computer) technique used to sharpen images.

3.4. Sharpening Image Using Sharpen Tools

Step 1. Choose Flatten Image from the Layers panel menu.

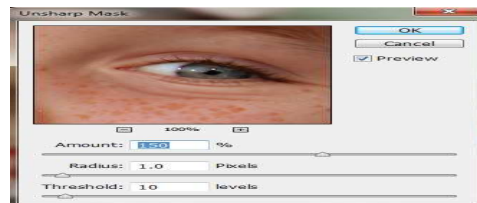
Step 2. Choose View > Actual pixels. You can pan image by holding down the spacebar and pushing.

Step 3. Choose Filter > Convert for Smart Filters. Then press OK. Smart Objects allow you to edit filters more freely.

Step 4. Choose Filter > Sharpen >Unsharp Mask. The Unsharp Mask dialog box appears.

Step 5. Type **150** into Amount text box. Click and hold on the Preview pane to turn the preview off and on as you make changes.

Step 6. Type **1** in the Radius text field and **10** in the Threshold text field, and click OK.



Step 7. Choose File > Save. Keep the file open for the next part of this lesson.

3.5 Lighten and Dark modes

Images are working with two sharpening modes one is called lighten mode another is darken mode.

Lighten modes

These modes drop out shadows, thereby making the blend appear lighter. The most commonly used blend mode in this group is Screen. You just want to lighten part of the image, so you can use a lightening technique that lightens only the luminosity and does not affect the colors.

Darken modes

As the name suggests, this group of blend modes makes images darker by dropping out the highlights. Multiply is the most popular.

3.6 Practice on Lighten and Darken Image using Curve Tools

Making images or parts of images lighter, or brighter, is a commonly needed adjustment. There are many ways to lighten/Darken an image in Photoshop. These are described is below.

Step 1. Open desired Images.

Step 2. Then select an images or part of images.

Step 3. Then select properties tools. Properties tool box appears.



Step 4. Then select necessary options to modify your images.

Step 5. Save your work.

3.7 Healing Brush Tools

The Healing Brush tool also lets you correct imperfections. Like the Clone Stamp tool, you use the Healing Brush tool to paint with pixels you sample from the image, but the Healing Brush tool also matches the texture, lighting, transparency, and shading of the sampled pixels.

3.8 Practice with Using Healing Brush Tools

Step 1. Open desired file choose View > Fit on Screen.

Step 2. Select the Zoom tool, then click and drag over the bottom area of the girl's dress.



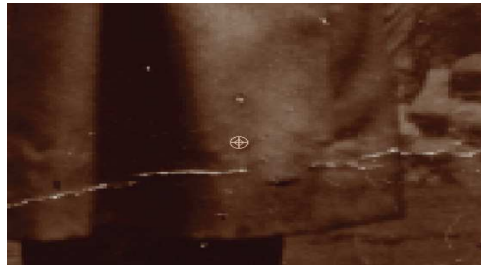
Click and drag to zoom into the dress.

Step 3. Select Spot Healing Brush ().

Step 4. Put cursor over an area near to the skirt. Hold down Alt and click to define the source for your Healing Brush tool.

Step 5. Now, paint over the fold line that is closest to the source area you defined.

Step 6. Repeat this process; Alt/Option+click in appropriate source areas near the folds across the dress,



Define a source and then paint with the Healing Brush tool.

Step 7. Choose File > Save your work.

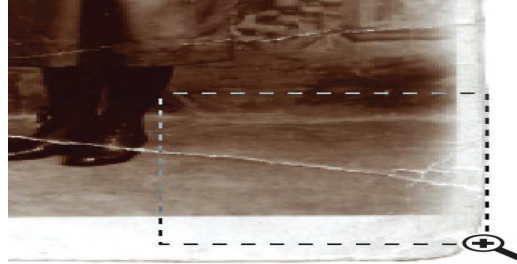
3.9 Spot Healing Brush Tools

The Spot Healing Brush tool paints with sampled pixels from an image and matches the texture, lighting, transparency, and shading of the pixels that are sampled to the pixels being retouched, or healed. Note that unlike the Clone Stamp tool, the Spot Healing Brush automatically samples from around the retouched area.

2.10 Practice with Using Spot Healing Brush Tools

Step 1. Open and select View > Fit on Screen,

Step 2. Select the Zoom tool (), then click and drag it to zoom into the lower-right corner.



Click And Drag with The Zoom Tool.

It can be easier to retouch. But it works well when retouching sections of an image that are not defined and detailed, like blemishes on skin or backgrounds.

Step 3. Select the Spot Healing Brush tool (), and then click repeatedly over the fold marks in the lower-right corner of the image. Spot Healing Brush, repair the fold lines. Use the History panel to undo steps, if necessary.

Step 4. Choose File > Save. Keep this file open for the next.

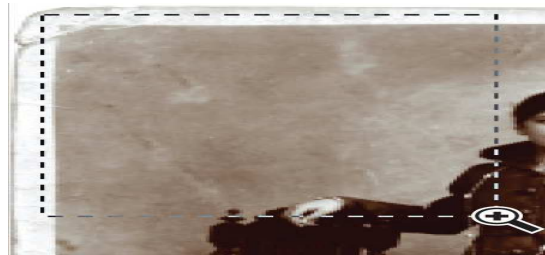
3.11 Patch Tools

You may find that there are large areas of scratches or dust marks that need to be retouched. You can use the Patch tool to replace large amounts of an image with image data that you sample as your source. In this section, you will fix the large dusty area in the upper-left part of the image.

3.12 Practice with Using Patch Tools

Step 1. Open desired file and choose View to Fit on Screen,

Step 2. Select the Zoom tool (), and then click and drag to zoom into the upper-left area of the image.

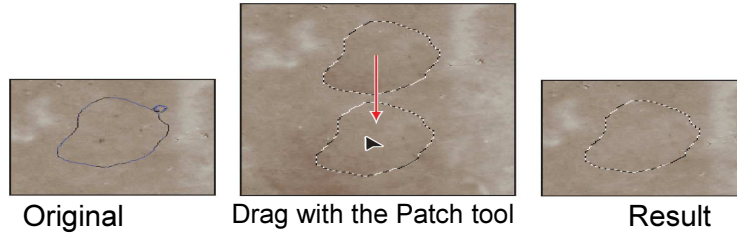


Click and drag to zoom into the upper-left corner.

Graphics Design

Step 3. Hold down on the Healing Brush tool () and select the hidden Patch tool ().

Step 4. Click and drag a selection to select a small area with defects. Then click and drag that selection over an area of the image with fewer defects, to use that area as a source.



Step 5. Continue to make selections and patch with the Patch tool to clean up most of the dust marks in the upper-left corner of the image.

Step 6. Choose File > Save your work for next action.

You can print publications in color in four ways. The easiest alternatives are to use a color printer in your office or to prepare black-and-white camera-ready artwork and instruct your commercial printer where you want to add color. The other approaches include using your computer to prepare separations for spot or process colors, if the software program you're using offers these capabilities.



ACTIVITY

3.13 Multiple Choice questions

- a. Which is the tool used to sharpening Images?
- i) Spot Healing Brush
 - ii) Sharpen Tool
 - iii) Smudge Tool
 - iv) Lasso selector.

3.14 Analytical questions.

1. What is called healing and spot healing brush?
2. Describe the process to Sharpening Image using Sharpen Tools.
3. Discuss about the process to repair fold lines using Rubber stamp Tools.
4. How can you replace Image Layers using Patch Tools?
5. Which is the tool used to repair fold lines and how?

